

LEGACY

Commercial Realty, LLC

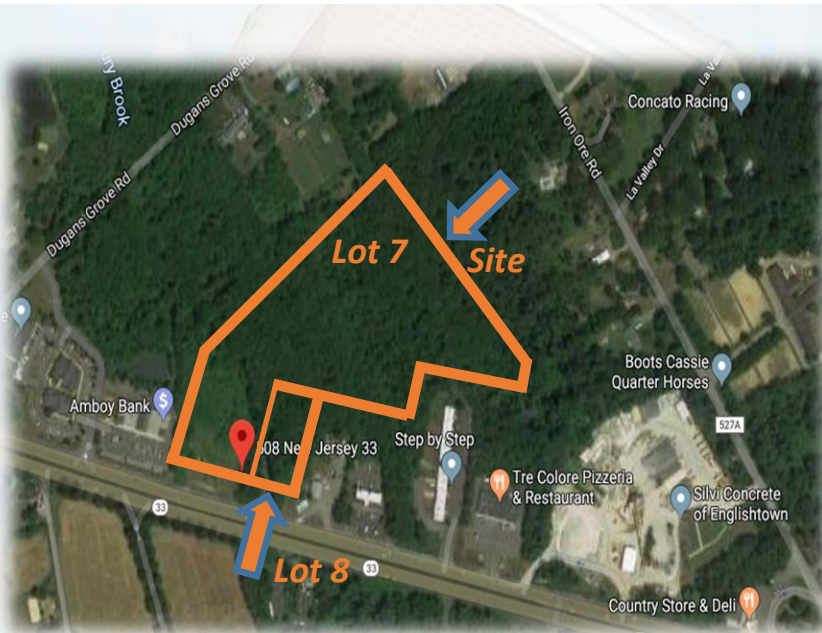
Land Available for Sale



PROPERTY DETAILS

508-512 Rt 33 W, Millstone, NJ 08535

AERIAL



ASKING PRICE

\$880,000.00

Lot 7:

Previously Approved Land for a 12,740 SF Retail Center.

Lot 8:

Previously Approved Land for a 3,200 SF PAD Site.

ASKING PRICE \$1,100,000.00

Inquire further for status or prior approvals

Located on highly traveled Route 33 in Millstone Township.

TOTAL LOT SIZE:

Block: 22, Lot: 7 7.86 AC

Block: 22, Lot: 8 0.84 AC

ZONING:

HC- Highway Commercial

PROPERTY TAX (2017)

Lot: 7 \$12,258.23

Lot: 8 \$1,936.83

Seth Katz, Broker of Record

Matt Miller, Sales Associate

Derin Goodman, Sales Associate

Legacy Commercial Realty, L.L.C.

510 Route 9 N, 2nd Floor Manalapan, NJ 07726

www.LegacyRealtyNJ.com P: 732.333.6380 | F: 732.333.6381

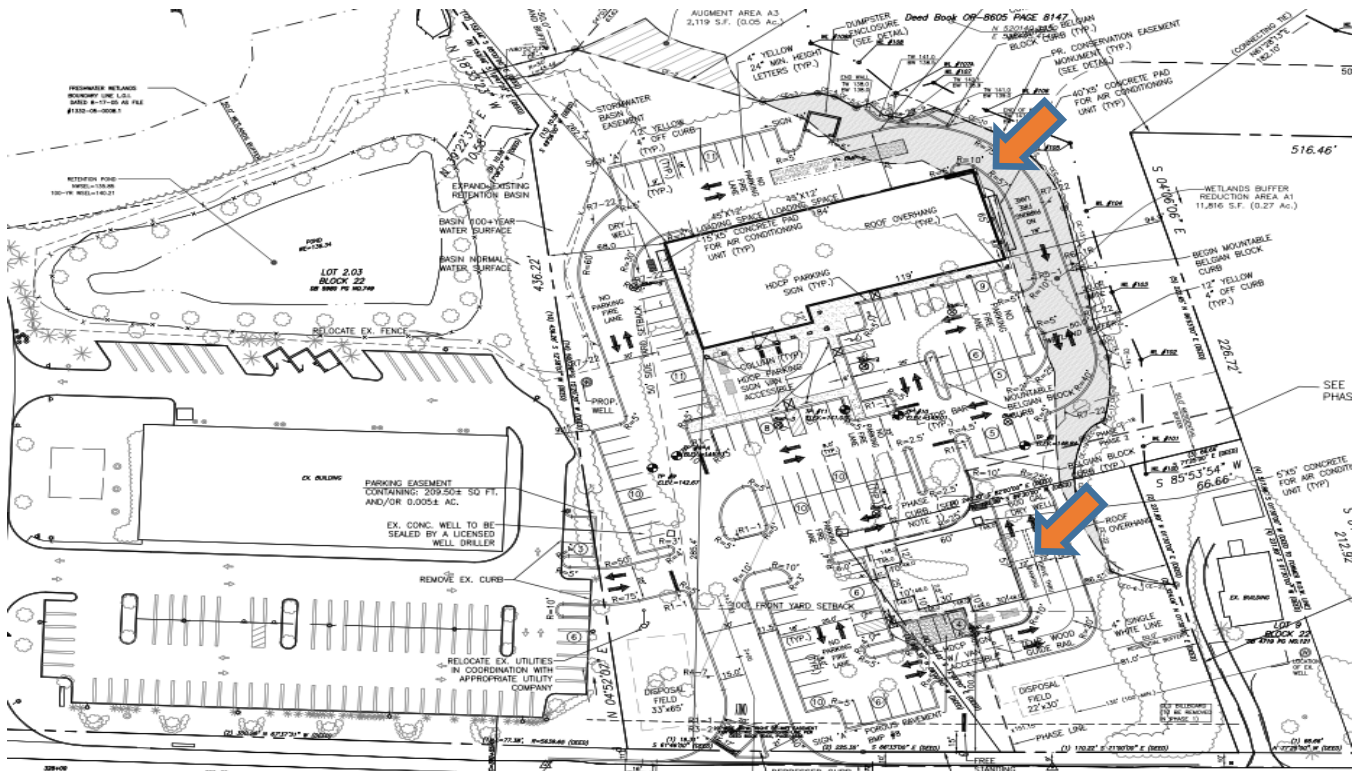
LEGACY

Commercial Realty, LLC



ADDITIONAL FEATURES

- Block: 22, Lots: 7 & 8
- Land For Sale With Prior Approvals which buyer will need to finalize.
- 8.7 Acres situated between two traffic lighted intersections.
- 354' Highway Frontage on Route 33 West
- Ideal for Retail, Medical, Fast Food with Drive Thru, Restaurants, or General Office Professionals.
- Close proximity to the New Jersey Turnpike and Freehold Raceway Mall



Seth Katz, Broker of Record Matt Miller, Sales Associate Derin Goodman, Sales Associate
Legacy Commercial Realty, L.L.C.
510 Route 9 N, 2nd Floor Manalapan, NJ 07726
www.LegacyRealtyNJ.com P: 732.333.6380 | F: 732.333.6381

All information furnished regarding property of sale, rental, or financing is from sources deemed reliable but no warranty or representation is made as to the accuracy thereof and same is submitted subject to errors, omissions, change of price, rental or withdrawal without notice.