

# LEGACY

Commercial Realty, LLC

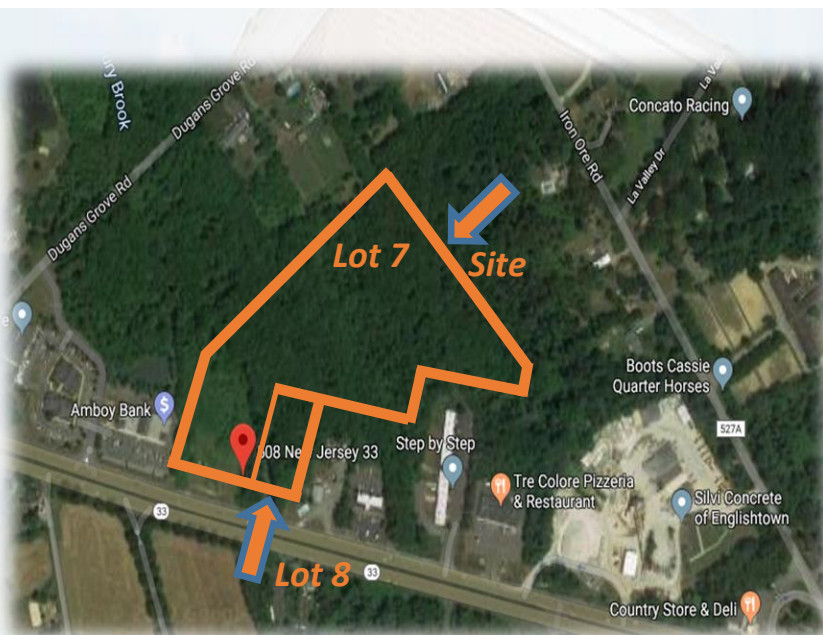
*Fully Approved Land Available for Sale - Retail / Medical*



## PROPERTY DETAILS

508-512 Rt 33 W, Millstone, NJ 08535

### AERIAL



### ASKING PRICE

**\$1,100,000.00**

**Lot 7: Fully Approved Land for a 12,740 SF Retail Center or Office Building.**

**Lot 8: Fully Approved Land for a 3,200 SF PAD Site.**

**(Can be Sold Separately)**

ASKING PRICE **\$1,100,000.00**

**Located on highly traveled Route 33 in Millstone Township.**

### TOTAL LOT SIZE:

**Block: 22, Lot: 7 7.86 AC**

**Block: 22, Lot: 8 0.84 AC**

### ZONING:

**HC- Highway Commercial**

### PROPERTY TAX (2017)

**Lot: 7 \$12,258.23**

**Lot: 8 \$1,936.83**

Seth Katz, Broker of Record

Matt Miller, Sales Associate

Derin Goodman, Sales Associate

Legacy Commercial Realty, L.L.C.

510 Route 9 N, 2<sup>nd</sup> Floor Manalapan, NJ 07726

[www.LegacyRealtyNJ.com](http://www.LegacyRealtyNJ.com) P: 732.333.6380 | F: 732.333.6381

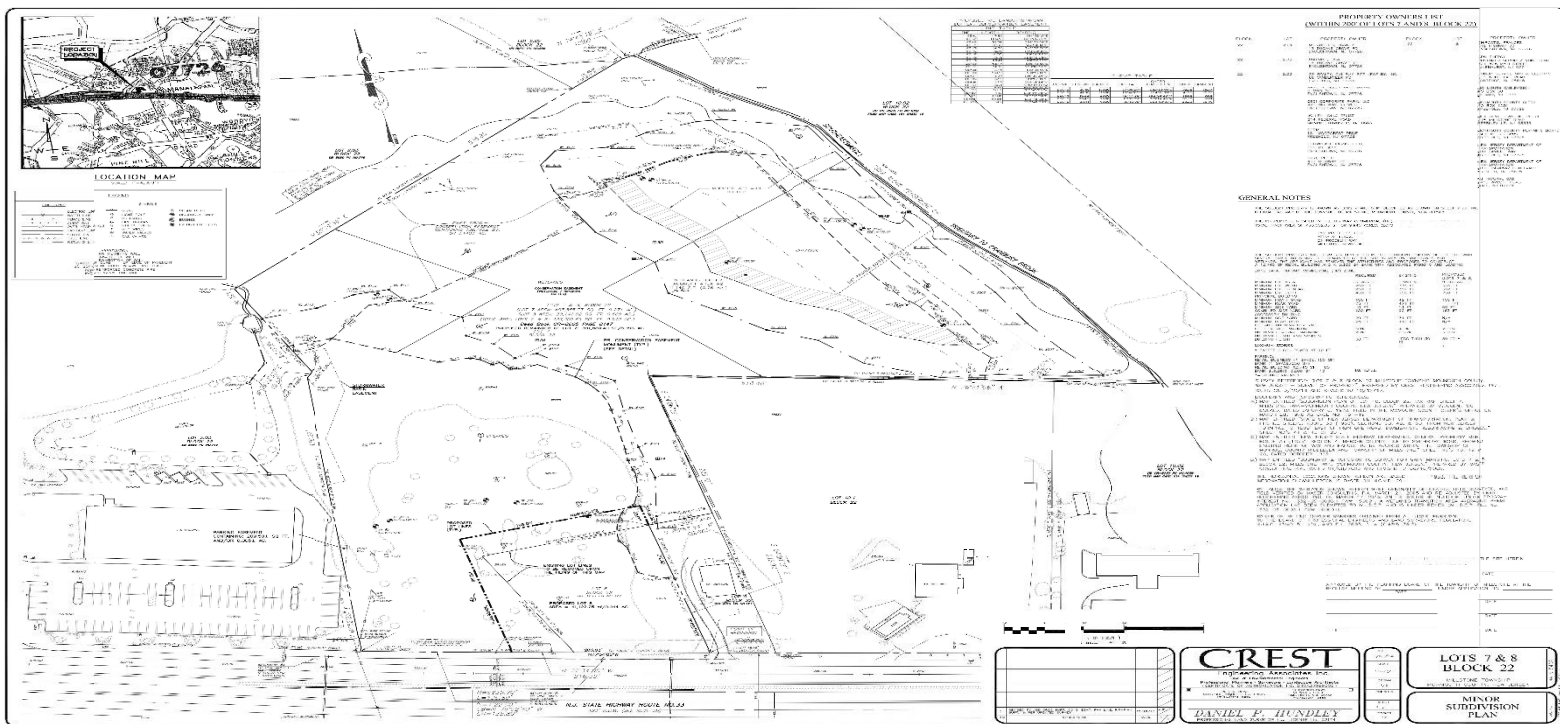
# LEGACY

## Commercial Realty, LLC



### ADDITIONAL FEATURES

- Block: 22, Lots: 7 & 8
- 8.7 Acres situated between two traffic lighted intersections.
- 354' Highway Frontage on Route 33 West
- Ideal for Retail, Medical, Fast Food with Drive Thru, Restaurants, or General Office Professionals.
- Close proximity to the New Jersey Turnpike and Freehold Raceway Mall
- Traffic Count - +/- 36,000 Vehicles Traveled Daily



Seth Katz, Broker of Record

Matt Miller, Sales Associate

Derin Goodman, Sales Associate

Legacy Commercial Realty, L.L.C.

510 Route 9 N, 2<sup>nd</sup> Floor Manalapan, NJ 07726

[www.LegacyRealtyNJ.com](http://www.LegacyRealtyNJ.com) P: 732.333.6380 | F: 732.333.6381



All information furnished regarding property of sale, rental, or financing is from sources deemed reliable but no warranty or representation is made as to the accuracy thereof and same is submitted subject to errors, omissions, change of price, rental or withdrawal without notice.